



# Hazardous Location Explosion Proof Luminaire Series EPLP



## Applications:

Suitable for commercial, industrial facilities, oil, gas, painting facilities, manufacturing, and auto service facilities.

## Ceiling Mount



## Wall Mounts

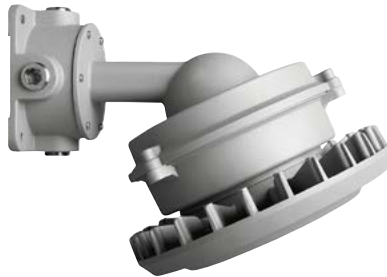


90° Wall Mount

## Flood



Adjustable Yoke



25° Wall Mount

## Stanchion Mounts



25° Stanchion Mount



90° Stanchion Mount

The Jemm EPLP Class 1, Division 2 Explosion Proof Hazardous Location Luminaire is available with a clear tempered glass lens. Typical lighting applications include industrial facilities, oil, gas, painting facilities, manufacturing, and auto service facilities.

### Specifications and Features:

- Heavy-Duty Die Cast Aluminum Housing
- ETL Listed for Hazardous Locations Per UL844 as Follows: Class 1, Division 2 Groups A, B, C, D; T4 Temperature Rating, -25°C to +50°C Ambient. Suitable for Wet Locations, Sealed LED Compartment
- Powdercoat Finish Over a Chromate Conversion Coating.
- Clear Tempered Glass Lens
- Mountings Include Pendant (Conduit by Others), Ceiling Mount Box, 25° and 90° Wall Mount with Box, 25° and 90° Stanchions, and Adjustable Yoke. Yoke Mount Includes 3' 16/3 SJOOW Cord and Rated Connector. Rated for 6 #12 AWG 90°C for Through Wiring. Mounts Shipped Separately, Field Installed.
- Aluminum Boards
- Array: 56.7w, System: 64w
- Electronic Driver, 120-277V, 50/60Hz; Less Than 20% THD and PF>0.90. Standard Internal Surge Protection 6kV. 0-10V Dimming Standard for a Dimming Range of 100% to 10%; Dimming Source Current is 150 Microamps.
- 5-Year Warranty

## Pendant Mount



**Class 1, Division 2  
Groups A, B, C, D  
T4 Temperature  
Rating**



1/2" Pendant Hub

## ORDERING GUIDE

Example: HB6140U5KB

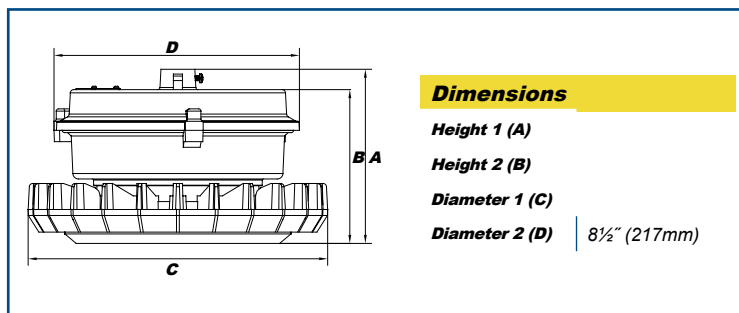
EPLP15	F	57	U		C	G		
Model	Optics	Wattage	Driver	CCT	Lens	Color	Mount	Options
EPLP15= Hazardous Location Explosion Proof Luminaire	F=Wide	57=57w	U=120-277V	4K=4000K 5K=5000K	C=Clear Tempered Glass Lens	G=Gray	Y=Adjustable Yoke W90=90° Wall Mount W25=25° Wall Mount S25=25° Stanchion S90=90° Stanchion P=Pendant Mount (Conduit by Others)	SP=Surge Protection

Specifications subject to change without notice.



# Hazardous Location Explosion Proof Luminaire Series EPLP

## Pendant Mount

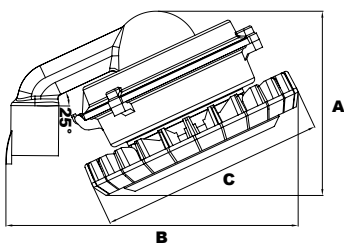


½" Pendant Hub

## Stanchion Mounts

### 25° Stanchion

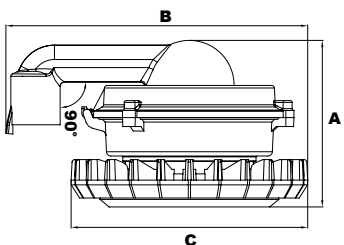
Shown with  
Adjustable Yoke



#### Dimensions

Height 1 (A)	8½" (216mm)
Length (B)	13½" (343mm)
Width (C)	10½" (265mm)

### 90° Stanchion

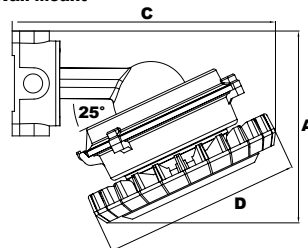


#### Dimensions

Height 1 (A)	7¼" (186mm)
Length (B)	13¼" (338mm)
Width (C)	10½" (265mm)

## Wall Mounts

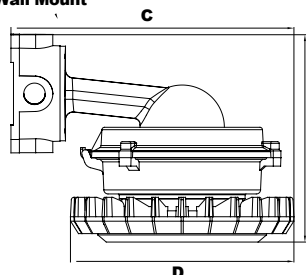
### 25° Wall Mount



#### Dimensions

Height 1 (A)	10" (256mm)
Height 2 (B)	5½" (140mm)
Length (C)	13¾" (352mm)
Width (D)	10½" (265mm)

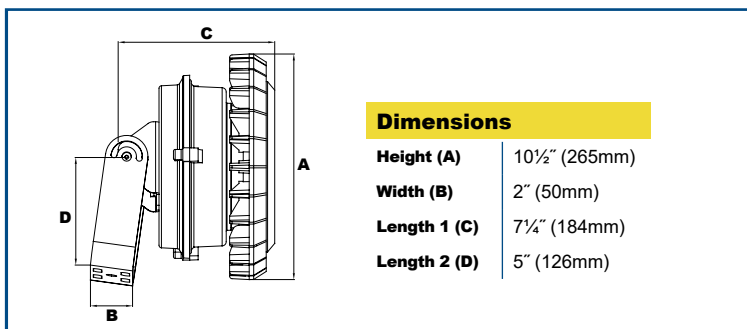
### 90° Wall Mount



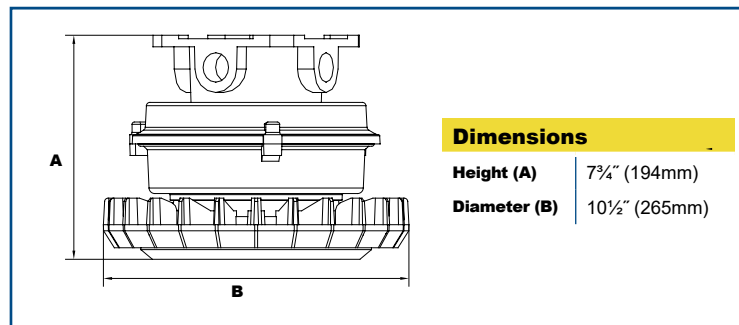
#### Dimensions

Height 1 (A)	9¾" (246mm)
Height 2 (B)	5½" (140mm)
Length (C)	13¼" (336mm)
Width (D)	10½" (265mm)

## Flood



## Ceiling Mount



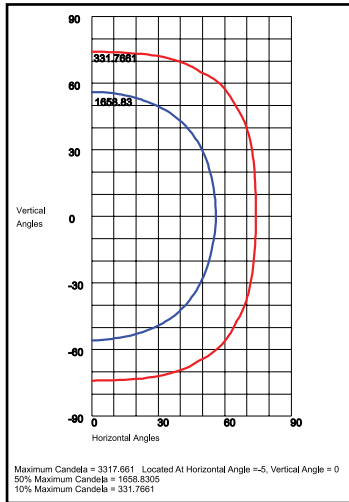
¾" Entrance Plugs

Specifications subject to change without notice.

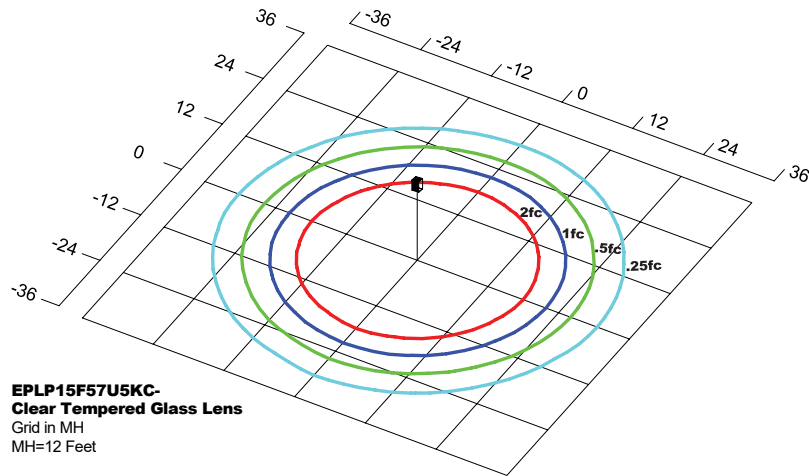


# Hazardous Location Explosion Proof Luminaire Series EPLP

## Photometric Data



**EPLP15F57U5KC-  
Clear Tempered Glass Lens**



## Photometric Performance

LED Board Watts	Drive Current (mA)	Input Watts		Optics	5000 CCT 80 CRI		4000 CCT 80 CRI	
					Lumens	LPW	Lumens	LPW
EasyLED 57w (Clear Lens)	175	64	F	110°H x 110°V, NEMA 7H x 7V	8,957	140	8,599	135

## Projected Lumen Maintenance

Data shown for 5000 CCT			Compare to MH				
TM-21-11	Input Watts	Initial	25,000 Hrs	50,000 Hrs	100,000 Hrs	Calculated L70@ 25°C	
L70 Lumen Maintenance @ 25°C / 77°F	64	1.00	0.96	0.92	0.84	183,000	
TM-21-11	Input Watts	Initial	25,000 Hrs	50,000 Hrs	100,000 Hrs	Calculated L80@ 40°C	
L80 Lumen Maintenance @ 50°C / 104°F	64	1.00	0.93	0.86	0.71	105,000	
TM-21-11	Input Watts	Initial	25,000 Hrs	50,000 Hrs	100,000 Hrs	Calculated L80@ 40°C	
L80 Lumen Maintenance @ 40°C / 104°F	64	1.00	0.94	0.88	0.75	81,000	

### NOTES:

- Projected per IESNA TM-21-11. Data references the extrapolated performance projections for the 175mA base model in a 25°C ambient, based on 10,000 hours of LED testing per IESNA LM-80-08.
- Compare to MH box indicates suggested Light Loss Factor (LLF) to be used when comparing to Metal Halide (MH) systems.

Specifications subject to change without notice.

Specifications subject to change without notice.