

EasyLED Round Dome Bollards

L70
25°C 147,000 Hours



The Jemm EasyLED Bollards with choice of optics and lenses are designed to replace HID lighting systems up to 100w MH or HPS. These fixtures are ideal for retail centers, industrial parks, schools and universities, public transit and airports, office buildings and medical facilities.

Specifications and Features:

Housing:

Extruded Aluminum Housing with Flush Mounting Base & Vandal-Resistant Screws, Domed Top, Internal Ballast Tray for Easy Maintenance. Bollards Can Be Cut to Custom Lengths Upon Request.

Listing & Ratings:

CSA: Listed for Wet Locations, ANSI/UL 1598, 8750; IP65 Sealed LED Compartment.

Finish:

Textured Architectural Bronze or Black Powdercoat Finish Over a Chromate Conversion Coating. Custom Colors Available Upon Request.

Style:

Clear Prismatic Borosilicate Glass Refractor, Specially Designed Cone Reflector or Internal Louvers

Lens:

Clear UV-Stabilized Polycarbonate Vandal-Resistant Lens or SoftLED LumaLens UV-Stabilized Polycarbonate Opal Vandal-Resistant Lens

Mounting Options:

Mounting Kit with 8" Zinc-Plated Anchor Bolts, Included.

EasyLED LED:

Aluminum Boards

Wattage:

Array: 10w, System: 11.3w; (50w HID Equivalent)
 Array: 14.5w, System: 17w; (70w HID Equivalent)
 Array: 22w, System: 23.8w; (100w HID Equivalent)

Driver:

Electronic Driver, 120-277V, 50/60Hz or 347V, 50/60Hz (15w Only); Less Than 20% THD and PF>0.90. Standard Internal Surge Protection 2kV. 0-10V Dimming Standard for a Dimming Range of 100% to 10%; Dimming Source Current is 150 Microamps.

Controls:

Fixtures Ordered with Factory-Installed Motion Sensor Controls are Internally Wired for Switching and/or 1-10V Dimming Within the Housing. Remote Direct Wired Interface of 1-10V Dimming is Not Implied and May Not Be Available, Please Consult Factory. Fixtures are Tested with LEPC Controls and May Not Function Properly With Controls Supplied By Others. Fixtures are NOT Designed for Use with Line Voltage Dimmers.

Warranty:

5-Year Warranty for -40°C to +40°C Environment.

See Page 4 for Projected Lumen Maintenance Table.



NEW Soft Shine Low Glare White Cone Reflector
 Daytime View Nighttime View



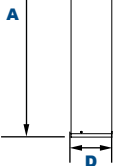
Glass BDG LED Cone Reflector Shown with Glare Shield BDR Louvers BDL



SoftLED LumaLens Opal Array Lens Shown with "S3" Sensor Shown with GFCI

Dimensions

Diameter (D)	7" (178mm)
Height (A)	42 1/4" (1,073mm)



Project Information:

Project Name: _____ Fixture Type: _____
 Complete Catalog #: _____ Date: _____
 Comments: _____

Certification & Listings:



Order Information Example:		BDLF22U5KZ36SF						
Model	Optics	Wattage	Driver	CCT	Lens	Color	Height	Options
BDRW =Round Dome Bollard with Soft Shine Low Glare White Cone Reflector BDR =Round Dome Bollard with LED Cone Reflector BDG =Round Dome Bollard with Glass BDL =Round Dome Bollard with Louvers	C =Type III* F =Wide Beam Spread *BDRW, BDR & BDG only	1X10 =10w 1X15 =15w 1X22 =22w	U =120-277V C =347V* *15w Model Only	3K =3000K 4K =4000K 5K =5000K	(Leave Blank) =Clear Lens L =SoftLED LumaLens Opal UV-Stabilized Polycarbonate Array Lens* *Type V White Cone Reflector Only	Z =Bronze B =Black C =Custom (Consult Factory)	(Leave Blank) =42" Standard Height 36 =36" Height 30 =30" Height	SF =Single Fuse* DF =Double Fuse* SP =Surge Protection GF1 =GFCI Outlet, 15A, 120V GSB =180° Glare Shield, Black GSZ =180° Glare Shield, Bronze GSC =180° Glare Shield, Custom Color (Consult Factory) S3 =Microwave Sensor with Dimming & Remote Programming, 120-277V Only. See P17121 Spec. Page for Details. BU =Battery Backup, 90 Minutes* *120-277V Models Only.

Accessories & Replacement Parts:

Mounting Accessories (Order Separately, Field Installed)	
BOLAN4	Mounting Kit, Includes Bracket & Three (3) 4" Zinc-Plated Anchor Bolts
BOLAN8	Mounting Kit, Includes Bracket & Three (3) 8" Zinc-Plated Anchor Bolts
BOLAN12	Mounting Kit, Includes Bracket & Three (3) 12" Zinc-Plated Anchor Bolts
BOLAN15	Mounting Kit, Includes Bracket & Three (3) 15" Zinc-Plated Anchor Bolts
BREBASE*	Bollard Retrofit Base Kit Adapts New Bollards to Most Existing Bolt Patterns. Fits all LEPG Bollards. Die Cast with Powdercoat Finish, Hardware Included. 1 1/2" Dia. x 1 1/2" H
*Specify Color: Z=Bronze, B=Black, C=Custom (Consult Factory)	

Accessories (Order Separately, Field Installed)	
P17122	Remote Programming Tool for P17121



P17122

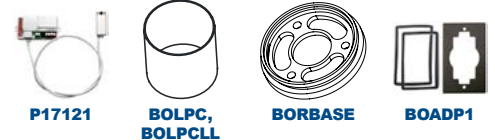
Replacement Parts (Order Separately, Field Installed)	
P17121	Internal Microwave Sensor with Dimming & Remote Programming, 120-277V Only. See P17121 Spec. Page for Details.
BOLPC	Replacement Round UV-Stabilized Polycarbonate Vandal-Resistant Lens
BOLPCLL	Replacement SoftLED LumaLens Opal UV-Stabilized Polycarbonate Array Lens
BORBASE*	Die Cast Base Plate with Powdercoat Finish Over a Chromate Conversion Coating.
BOADP1	Adapter Plate with Gaskets for Outlet Boxes. Fits LEPG Round Bollards. Die Cast with Bronze Powdercoat Finish.
*Specify Color: Z=Bronze, B=Black, C=Custom (Consult Factory)	

For Replacement Battery Backup, see the LEPG LED Battery Backup Specification Sheet.



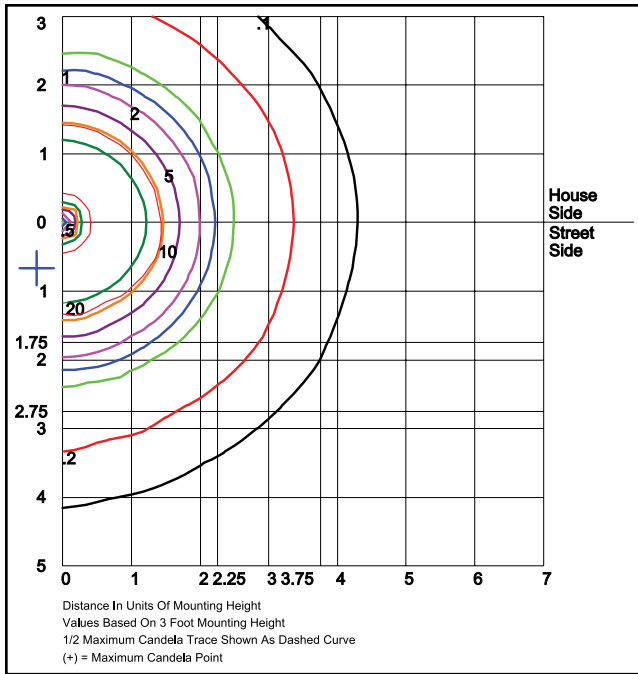
BOLAN BREBASE*

*Shown Mounted



P17121 BOLPC, BOLPCLL BORBASE BOADP1

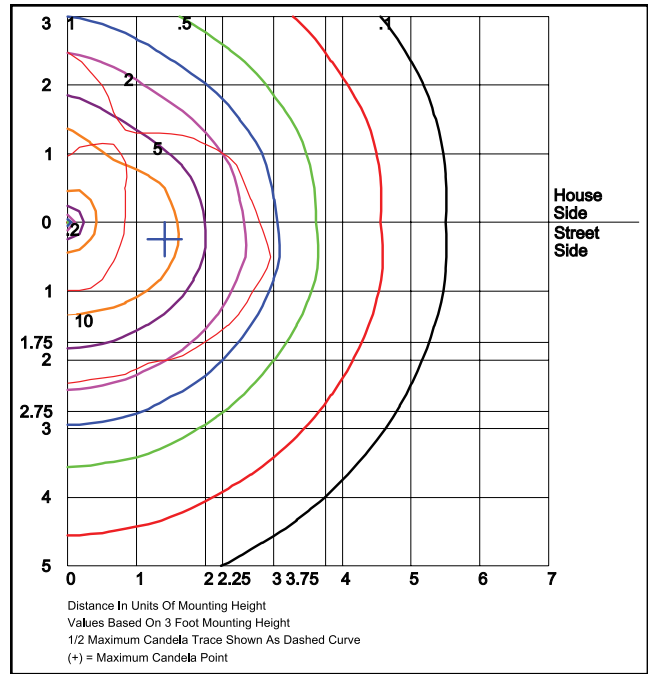
Photometric Data



BDRWF22U5K & BDRF22U5K

Type V

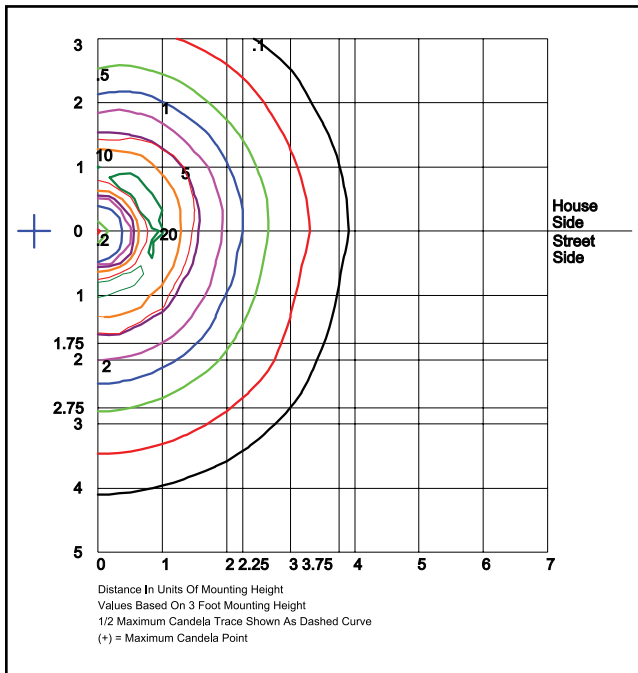
Grid in feet, Mounting Height = 3 ft.



BDGC22U5K

Type III

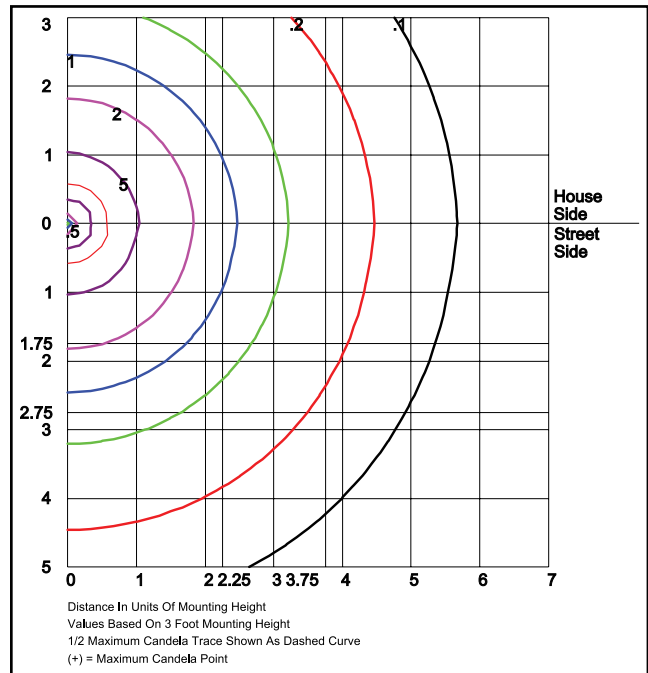
Grid in feet, Mounting Height = 3 ft.



BDLF22U5K

Type V

Grid in feet, Mounting Height = 3 ft.



BDRWF22U5KL, LumaLens

Type V

Grid in feet, Mounting Height = 3 ft.

Photometric Performance

Optic	Wattage (Catalog Logic)	10W (1X22)	15W (1X15)	20W (1X22)
	Input Watts	11.3W	15.9W	23.8W
	CCT	Delivered Lumens		
BDRW & BDR Cone Reflector C=Type III Optic	3000K	738	1,033	1,549
	4000K	800	1,120	1,680
	5000K	834	1,167	1,750
	BUG Rating	B0-U2-G1	B1-U3-G1	B1-U3-G1
BDRW & BDR Cone Reflector F=Type V Optic	3000K	1,031	1,444	2,165
	4000K	1,119	1,566	2,349
	5000K	1,165	1,631	2,447
	BUG Rating	B1-U3-G1	B1-U3-G1	B1-U3-G1
BDG Glass C=Type III Optic	3000K	789	1,105	1,657
	4000K	856	1,199	1,798
	5000K	892	1,249	1,873
	BUG Rating	B1-U3-G1	B1-U3-G1	B1-U3-G1
BDG Glass F=Type V Optic	3000K	773	1,082	1,622
	4000K	838	1,173	1,760
	5000K	873	1,222	1,833
	BUG Rating	B1-U3-G1	B1-U3-G1	B1-U3-G1
BDL Louvers F=Type V Optic Only	3000K	521	730	1,094
	4000K	565	791	1,187
	5000K	589	824	1,236
	BUG Rating	B0-U2-G0	B1-U2-G1	B1-U3-G1

Projected Lumen Maintenance

Data shown for 5000 CCT TM-21-11	Input Watts	Compare to MH				Calculated LED Life
		Initial	25,000 Hrs	50,000 Hrs	100,000 Hrs	
L70 Lumen Maintenance @ 25°C / 77°F	All wattages up to and including 24w	1.00	0.95	0.90	0.80	147,000
L70 Lumen Maintenance @ 50°C / 122°F		1.00	0.89	0.78	0.55	67,000
L80 Lumen Maintenance @ 40°C / 104°F		1.00	0.92	0.85	0.70	66,000

NOTES:

1. Projected per IESNA TM-21-11. Data references the extrapolated performance projections for the 116mA base model in a 25°C ambient, based on 10,000 hours of LED testing per IESNA LM-80-08.
2. Compare to MH box indicates suggested Light Loss Factor (LLF) to be used when comparing to Metal Halide (MH) systems.