



# Reveal Round & Square Bollards

L70  
25°C

187,000 Hours



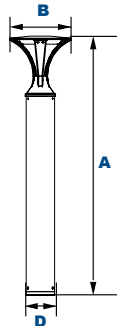
B3 - Reveal Round Bollard

B4 - Reveal Square Bollard

Shown with "S3" Sensor



Shown with GFCI



### Dimensions

Width (B)	10 1/4" (260mm)
Diameter (D)	4 3/4" (120mm)
Height (A)	43 3/8" (1,095mm)

The Jemm B3 and B4 EasyLED Reveal Cutoff Bollards with UV-stabilized polycarbonate lenses and sealed optical compartments are designed to replace HID lighting systems up to 100w MH or HPS. These fixtures are ideal for retail centers, industrial parks, schools and universities, public transit and airports, office buildings and medical facilities.

### Specifications and Features:

#### Housing:

Extruded Aluminum Housing with Flush Mounting Base & Vandal-Resistant Screws, Flat Top, Sealed Driver Compartment.

#### Listing & Ratings:

CSA: Listed for Wet Locations, ANSI/UL 1598, 8750  
IP66 Sealed LED Compartment.

#### Finish:

Textured Architectural Bronze or Black Powdercoat Finish Over a Chromate Conversion Coating. Custom Colors Available Upon Request.

#### Lens:

Clear UV-Stabilized Polycarbonate or SoftLED LumaLens Opal UV-Stabilized Polycarbonate Vandal-Resistant Inner Lens to Seal LED Array.

#### Mounting Options:

Mounting Kit with 8" Anchor Bolts, Included.

#### EasyLED LED:

Aluminum Boards

#### Wattage:

Array: 16.6w, System: 20.2w; (100w HID Equivalent)

#### Driver:

Electronic Driver, 120-277V, 50/60Hz or 347V, 50/60Hz; Less Than 20% THD and PF>0.90. Standard Internal Surge Protection 2kV. 0-10V Dimming Standard for a Dimming Range of 100% to 10%; Dimming Source Current is 150 Microamps.

#### Controls:

Fixtures Ordered with Factory-Installed Motion Sensor Controls are Internally Wired for Switching and/or 1-10V Dimming Within the Housing. Remote Direct Wired Interface of 1-10V Dimming is Not Implied and May Not Be Available, Please Consult Factory. Fixtures are Tested with LEPC Controls and May Not Function Properly With Controls Supplied By Others. Fixtures are NOT Designed for Use with Line Voltage Dimmers.

#### Warranty:

5-Year Warranty for -40°C to +50°C Environment.

See Page 2 for Projected Lumen Maintenance Table.

### Order Information Example:

B4F16U5KCZ36SF

Model	Optics	Wattage	Driver	CCT	Lens	Color	Height	Options
B3=Reveal Round Bollard B4=Reveal Square Bollard	F=Wide Beam Spread	16=16w	U=120-277V C=347V	4K=4000K 5K=5000K	C=Clear UV-Stabilized Polycarbonate Array Lens L=SoftLED LumaLens Opal UV-Stabilized Polycarbonate Array Lens	Z=Bronze B=Black C=Custom (Consult Factory)	(Leave Blank)= 43 3/8" Standard Height 36=36" Height 30=30" Height	SF=Single Fuse (120-277V Only) DF=Double Fuse (120-277V Only) SP=Surge Protection GF1=GFCI Outlet, 15A, 120V S3=Internal Microwave Sensor (120-277V Only)

### Project Information:

Project Name: \_\_\_\_\_ Fixture Type: \_\_\_\_\_

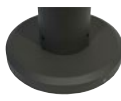
Complete Catalog #: \_\_\_\_\_ Date: \_\_\_\_\_

Comments: \_\_\_\_\_

### Certification & Listings:



## Accessories & Replacement Parts:



**BREBASE\***



**P17122**



**P17121**



**BOADP1**

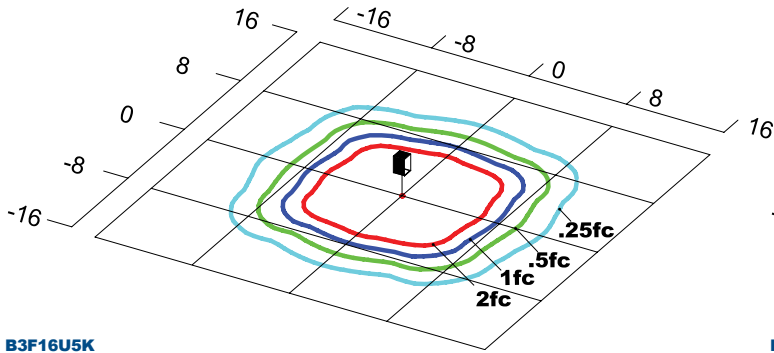
Mounting Accessories (Order Separately, Field Installed)	
BREBASE*	Bollard Retrofit Base Kit Adapts New Bollards to Most Existing Bolt Patterns. Fits all LEPG Bollards. Die Cast with Powdercoat Finish, Hardware Included. 1 1/2" Dia. x 1 1/2" H
*Specify Color: Z=Bronze, B=Black, C=Custom (Consult Factory)	

Accessories (Order Separately, Field Installed)	
P17122	Remote Programming Tool for P17121

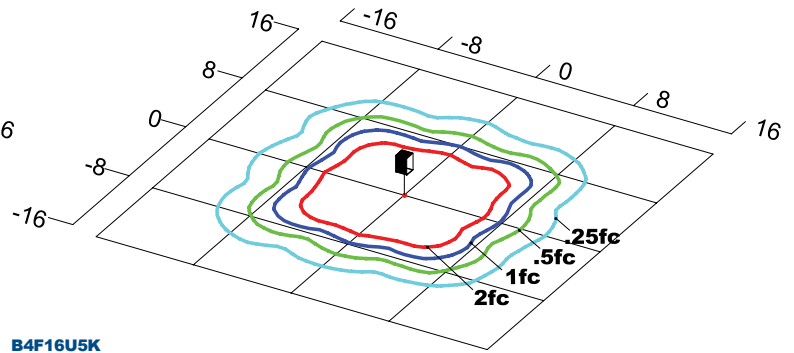
Replacement Parts (Order Separately, Field Installed)	
P17121	Internal Microwave Sensor (120-277V Only)
B3LL	SoftLED LumaLens Opal UV-Stabilized Polycarbonate Array Lens
B4LL	SoftLED LumaLens Opal UV-Stabilized Polycarbonate Array Lens
BOADP1	Adapter Plate with Gaskets for Outlet Boxes. Fits LEPG Round Bollards. Die Cast with Bronze Powdercoat Finish.

\*Shown Mounted

## Photometric Data



**B3F16U5K**  
Type V  
Grid in feet, Mounting Height = 3.5 ft.



**B4F16U5K**  
Type V  
Grid in feet, Mounting Height = 3.5 ft.

## Photometric Performance

LED Board Watts	Drive Current (mA)	Input Watts	Optics	5000 CCT 80 CRI				4000 CCT 80 CRI					
				Lumens	LPW	B	U	G	Lumens	LPW	B	U	G
EasyLED 16w	525	20	B3 Type V	1,603	80	1	2	1	1,539	77	1	2	1
			B4 Type V	1,678	84	1	2	1	1,611	81	1	2	1

## Projected Lumen Maintenance

Data shown for 5000 CCT			Compare to MH			
TM-21-11	Input Watts	Initial	25,000 Hrs	50,000 Hrs	100,000 Hrs	Calculated L70@ 25°C
<b>B3 L70 Lumen Maintenance @ 25°C / 77°F</b>	20	1.00	0.96	0.92	0.84	187,000
<b>B4 L70 Lumen Maintenance @ 25°C / 77°F</b>	20	1.00	0.96	0.92	0.84	187,000
TM-21-11	Input Watts	Initial	25,000 Hrs	50,000 Hrs	100,000 Hrs	Calculated L70@ 50°C
<b>B3 L70 Lumen Maintenance @ 50°C / 122°F</b>	20	1.00	0.94	0.87	0.74	117,000
<b>B4 L70 Lumen Maintenance @ 50°C / 122°F</b>	20	1.00	0.93	0.87	0.73	113,000
TM-21-11	Input Watts	Initial	25,000 Hrs	50,000 Hrs	100,000 Hrs	Calculated L80@ 40°C
<b>B3 L80 Lumen Maintenance @ 40°C / 104°F</b>	20	1.00	0.97	0.93	0.87	151,000
<b>B4 L80 Lumen Maintenance @ 40°C / 104°F</b>	20	1.00	0.97	0.93	0.86	144,000

### NOTES:

1. Projected per IESNA TM-21-11. Data references the extrapolated performance projections for the 525mA base model in a 25°C ambient, based on 10,000 hours of LED testing per IESNA LM-80-08.
2. Compare to MH box indicates suggested Light Loss Factor (LLF) to be used when comparing to Metal Halide (MH) systems.